

FOR LEASE

10891 Almond Avenue • Fontana

51 Dock High Positions on ± 4.73 Acres

Owned By:

REALTERM



Features

- $\pm 25,144$ SF on Approximately 4.73 Acres of Land
Total Square Footage (3 Structures) below:
 - » $\pm 19,336$ SF Dock Area
 - » $\pm 1,836$ SF Office Area
 - » $\pm 3,972$ SF 3-Bay Shop
- Dock High Doors: 51-All With Edge of Dock Plates
- 5 Ground Level Doors
- 45' Concrete Truck Apron
- Fenced, Lit & Paved
- Zoned: SWIP/SWD
- Located Close to the 10/15 Freeway Interchange

For more information, please contact:

NEWMARK

Steve Sprenger

Vice Chairman

909.974.4078

steve.sprenger@nrmk.com

CA License #01202806

Randy Lockhart

Vice Chairman

909.974.4067

randy.lockhart@nrmk.com

CA License #00974981



FOR LEASE

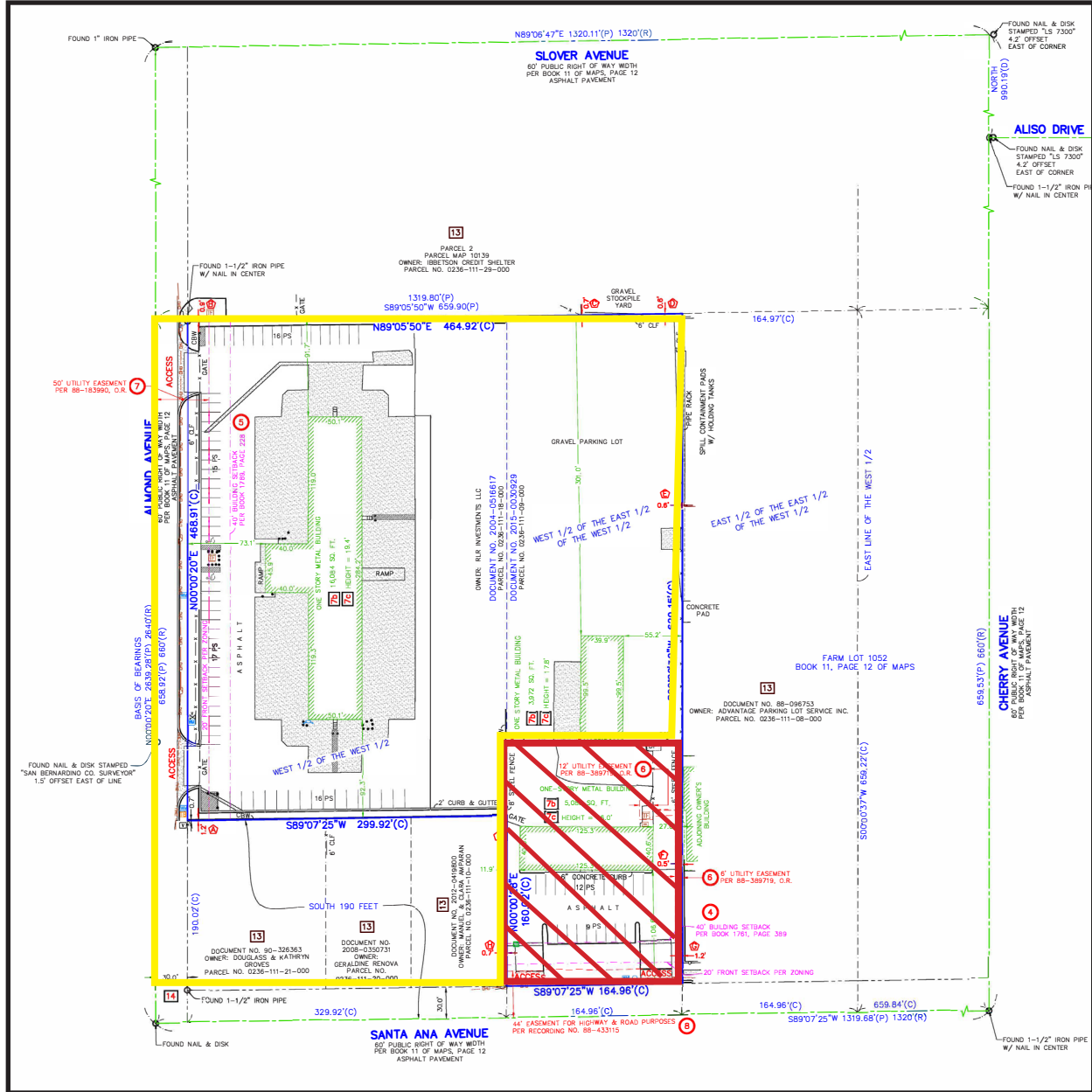
10891 Almond Avenue • Fontana

51 Dock High Positions on ±4.73 Acres

Owned By:

REALTERM

SITE PLAN



Steve Sprenger
Vice Chairman
909.974.4078
steve.sprenger@nrmk.com
CA License #01202806

Randy Lockhart
Vice Chairman
909.974.4067
randy.lockhart@nrmk.com
CA License #00974981

The information contained herein was obtained from sources believed reliable; however, NEWMARK makes no guarantees, warranties, or representations as to the completeness or accuracy thereof. The presentation of this property is submitted subject to errors, omissions, change of price or conditions prior to sale or lease, or withdrawal without notice.

FOR LEASE

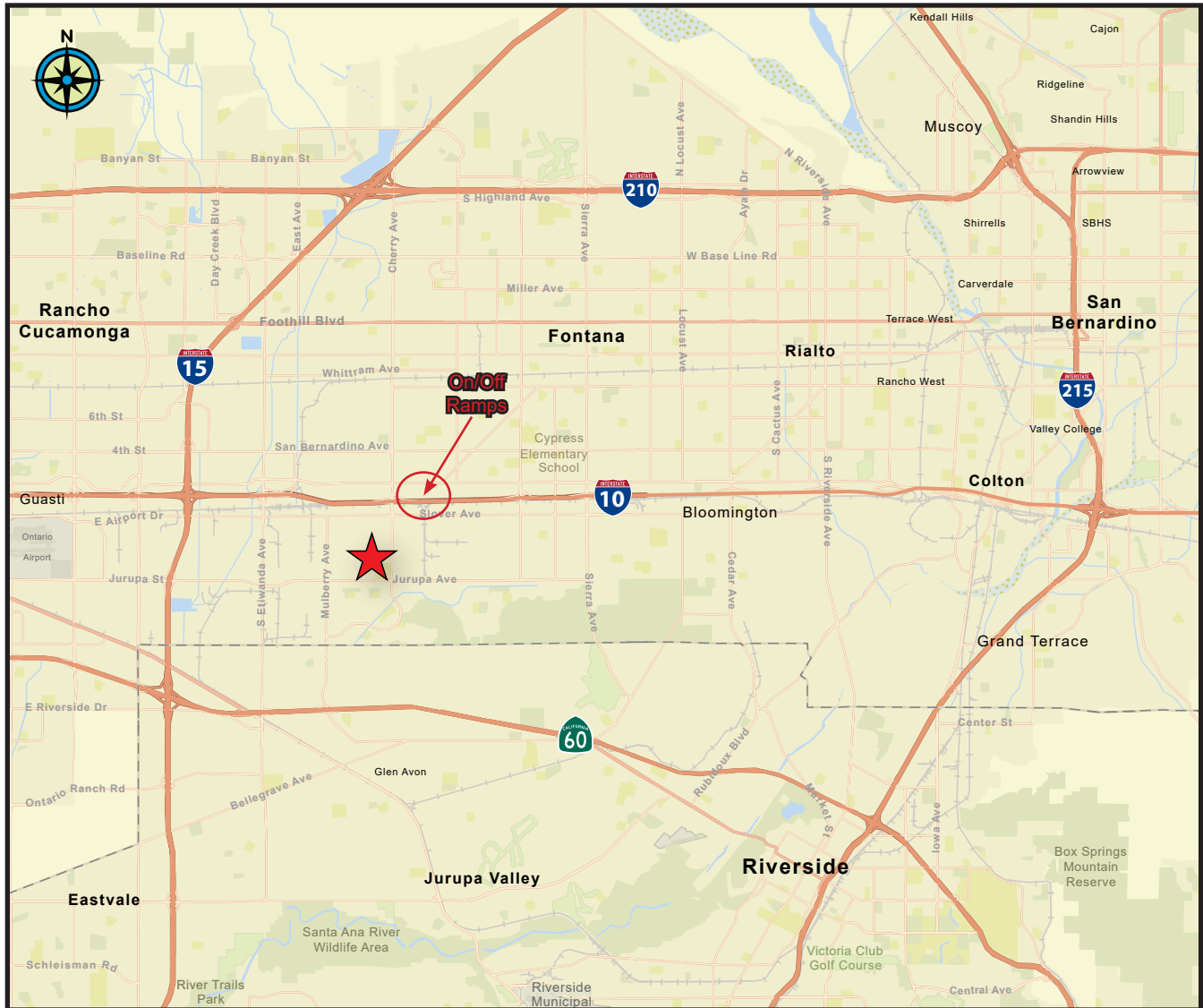
10891 Almond Avenue • Fontana

51 Dock High Positions on ±4.73 Acres

Owned By:

REALTERM

LOCATOR MAP



For more information, please contact:

NEWMARK

Steve Sprenger

Vice Chairman

909.974.4078

steve.sprenger@nrmk.com

CA License #01202806

Randy Lockhart

Vice Chairman

909.974.4067

randy.lockhart@nrmk.com

CA License #00974981

The information contained herein was obtained from sources believed reliable; however, NEWMARK makes no guarantees, warranties, or representations as to the completeness or accuracy thereof. The presentation of this property is submitted subject to errors, omissions, change of price or conditions prior to sale or lease, or withdrawal without notice.

FOR LEASE

10891 Almond Avenue • Fontana

51 Dock High Positions on ±4.73 Acres

Owned By:

REALTERM

REGIONAL MAP



For more information, please contact:

Steve Sprenger

Vice Chairman

909.974.4078

steve.sprenger@nrmk.com

CA License #01202806

Randy Lockhart

Vice Chairman

909.974.4067

randy.lockhart@nrmk.com

CA License #00974981

NEWMARK

The information contained herein was obtained from sources believed reliable; however, NEWMARK makes no guarantees, warranties, or representations as to the completeness or accuracy thereof. The presentation of this property is submitted subject to errors, omissions, change of price or conditions prior to sale or lease, or withdrawal without notice.

FOR LEASE

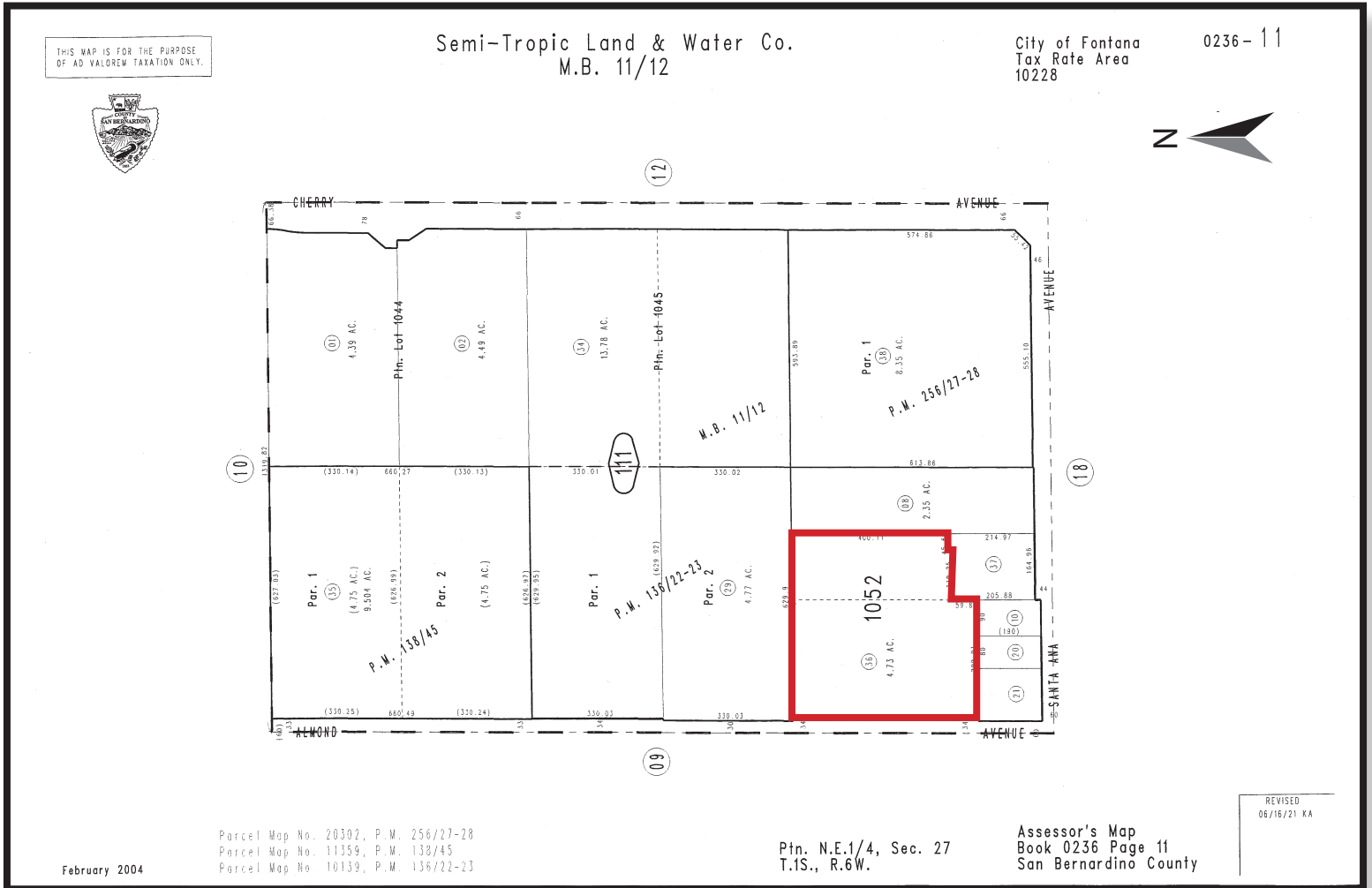
10891 Almond Avenue • Fontana

51 Dock High Positions on ±4.73 Acres

Owned By:

REALTERM

Parcel Map



For more information, please contact:

NEWMARK

Steve Sprenger

Vice Chairman

909.974.4078

steve.sprenger@nrmk.com

CA License #01202806

Randy Lockhart

Vice Chairman

909.974.4067

randy.lockhart@nrmk.com

CA License #00974981

The information contained herein was obtained from sources believed reliable; however, NEWMARK makes no guarantees, warranties, or representations as to the completeness or accuracy thereof. The presentation of this property is submitted subject to errors, omissions, change of price or conditions prior to sale or lease, or withdrawal without notice.